



## REACH Winter Newsletter



### Results, results, results!

#### Happy New Year to the REACH community!

We hope you all managed to have a break of some sort during December, and congratulations on surviving the 64-week-long month that is January.

Here at REACH Towers, we've hit the 2024 ground running with lots of **exciting results** from our work, none of which would be possible without **you**. We're really pleased to present the results from our **PEAR** project, our **Equality, Diversity and Inclusion report**, and some **exciting upcoming presentations!** We are also introducing a **STAR-of-the-month** to give some very well deserved recognition to our brilliant members and contributors.

Have a read below to see what's on the horizon and, as always, **give us a shout if you'd like to get involved** in anything you see.

Research love,

*Team REACH xx*

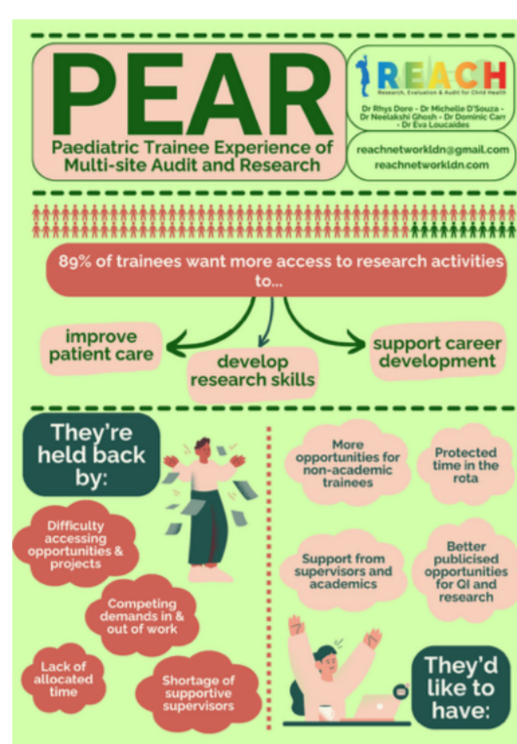
### Still seeking local leads!

We still need local leads for **Newham, GOSH, West Middlesex, St Mary's, Queen Charlotte's, Hillingdon, Royal Brompton, Woolwich, St Helier and Royal Marsden.**

If you'd like to get stuck into some research with our full support (and have a lot of fun along the way!) please [email us](#).

We are also recruiting local leads for the next rotation so if you've missed out this time around, drop us a line!

### PEAR results!



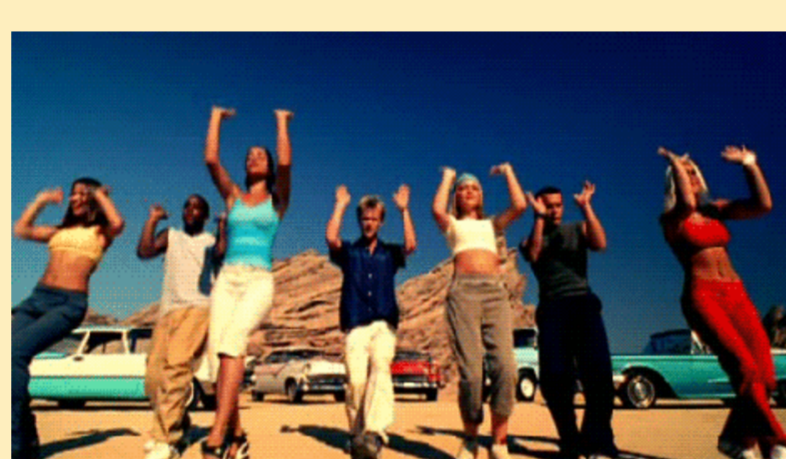
Thank you so much to everyone who helped with our PEAR project (Paediatric Trainee Experience of Multi-site Audit and Research), answering and sharing our survey.

We have collated the results, which show the barriers trainees experience in accessing research opportunities, the relative lack of support for those outside an academic training pathway, and the volume of research work done in trainees' own time, unpaid. Have a look at our infographics on the [PEAR page](#) to find out more!

The work will continue with the PEAR DROPS study, in which we will gather information on the quantity of directly rostered time for SPAs. This project is in its early stages, but please see the [PEAR DROPS page](#) on our website for more information.

### REACH! You're a star...

Obviously sung to the tune of S Club 7's seminal 2000 hit, this is our new segment where we'll be highlighting some of the brilliant work done by REACH members. Keep plugging away at those projects and it could be you!



This month's STAR is **Sarah Chambers** from **Whipps Cross** who has come straight out of 2024's gate as the first person to complete the **Bilines** and **Oral Fluid Challenge** surveys. **Thank you for your rapid work, Sarah!**

### Our first Equality, Diversity & Inclusion report is live

REACH is all about community and collaboration, and encouraging the next generation of paediatric researchers. One of our core aims is to ensure that the future of paediatric research is representative of our community and our speciality, and so we felt it was important to be transparent about the makeup of REACH. Our first **EDI report** has been published, and we would welcome you to take a look.

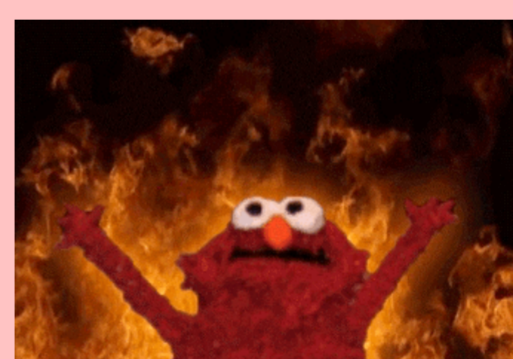
We will publish this data regularly on our [website](#), and use it as a tool to improve in the future. Watch this space!

### PEdSIG success!

We are so excited to have received a PEdSIG Educational Grant, and look forward to putting this to excellent use to keep empowering junior Paediatric doctors to ask and answer relevant clinical questions. Thank you so much to everyone who helped with this application and to PEdSIG for choosing us!

### FIRE is headed to RCPCH Conference!

We are so excited to announce that the **FIRE team** have been accepted for an **oral presentation** at the **RCPCH Conference 2024 in Birmingham** with their abstract titled **"How does practice differ between London hospitals in the management of febrile infants? An analysis of data from Febrile Infants Regional Evaluation (FIRE)".**



Huge **congratulations** to Stephanie, Rose and the **FIRE** team on this amazing achievement!

### Catch up with our other projects

There's always too much to put in one newsletter, so don't forget to check our website for updates on our ongoing projects, like [Bilines](#) and the PEAR follow-on project, [PEAR DROPS!](#) We always have plenty to jump on board with :)

#### REACH RESEARCH NOTICEBOARD

An opportunity for you to post any available research-related opportunities in London to the REACH community. If you would like to advertise your opportunity please e-mail us at [reachnetworkldn@gmail.com](mailto:reachnetworkldn@gmail.com).

Queen Mary University of London Barts and The London

Are you a consultant involved in the management of children presenting to the emergency department with acute wheeze and asthma?

Please fill out this survey so we can better understand the variation in management across London

Scan the QR code here

CLICK HERE

Management of acute asthma and wheeze - Google Forms

Contact Dr Helena Wilcox: [Helena.Wilcox1@barts.net](mailto:Helena.Wilcox1@barts.net) for further information

**Management of acute asthma and wheeze - survey aimed at consultants working in ED**

See the poster to the left for details of a survey from Dr Helena Wilcox aimed at understanding the variation in wheeze management across London, or [click here](#) to respond!



Copyright © REACH Network London 2022, All rights reserved.

Visit our [website](http://www.reachnetworkldn.com) [www.reachnetworkldn.com](http://www.reachnetworkldn.com)  
E-mail us: [reachnetworkldn@gmail.com](mailto:reachnetworkldn@gmail.com)

Want to change how you receive these emails?  
You can [update your preferences](#) or [unsubscribe from this list](#)

